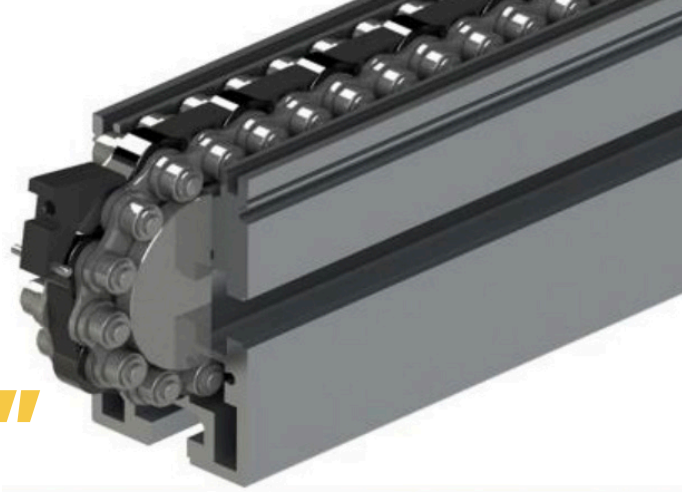


GLIDE-LINE ROLLER CHAIN CONVEYOR IS "READY TO ROLL"



Integrators and End Users have relied on Glide-Line for over 10 years for Work Piece Pallet and Direct Product Handling solutions that are **"Fast, Flexible, and Easy"**

We now offer those same Glide-Line Advantages for applications requiring heavier capacities:

- 2,200lb accumulation capacity (conservative)
- Inherently reversible
- Overall Design lends itself to many high-temp applications (consult factory)
- Attractive lead time and price point vs competition
- Length, Width, and Drive Box location all configurable within 1mm
- Chain Rollers will run on hardened steel round rails as a standard
- Option of Static or Dynamic Traction Control (an Industry First)
- Filler Blocks available for part protection/jam prevention
- Aluminum T Slot conveyor frame mates up directly to our Timing Belt Conveyors and Devices (with the option of Electro-Mechanical Drives for heavy loads) allowing for seamless pairing within a conveyor system
- Pricing/Models currently available and soon to reside within IMPACT!, our Cloud Based Configurator/Quote Tool



For more information on this exciting new product check out

GLIDE-LINE.COM/ROLLER-CHAIN-CONVEYOR-WITH-DYNAMIC-TRACTION-CONTROL

